



# ESE-5

Portable Color  
Ultrasound Doppler



IMAGING SYSTEMS



# ESE-5

## Portable Color Ultrasound Doppler



Our revolutionary RF platform, the first of its kind, offers unique processing technology high-quality ultrasound images, and unmatched performance.

- Exclusive RF platform produces clearer images and more data.
- Comprehensive processing tools support a wider range of clinical applications.
- Advanced image processing technology improves image quality.
- Special 4D rendering technology produces high quality fetal images.
- Easy-to-use, interactive interface provides simple operation.
- Option for continued upgrades protects user's investment.



***Best-in-class compact,  
multi-purpose ultrasound***



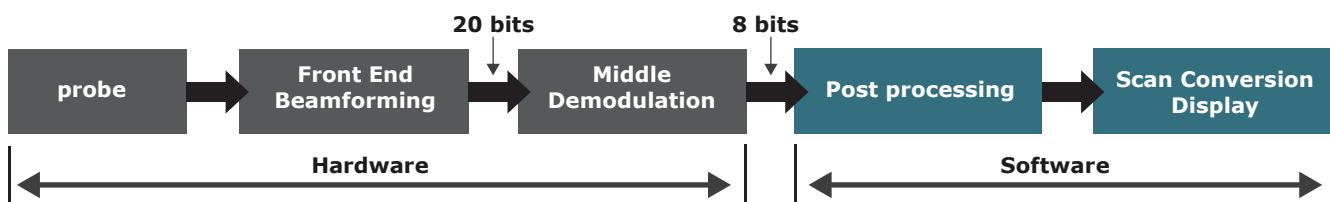
# Advanced Technologies

## Unique RF Platform Xcen Probe Technology

Because of hardware limitations, traditional front-end RF platforms are unable to transmit certain useful information. ESE-5 platform is the first in the fast processing power ensure detailed images and accurate measurements.

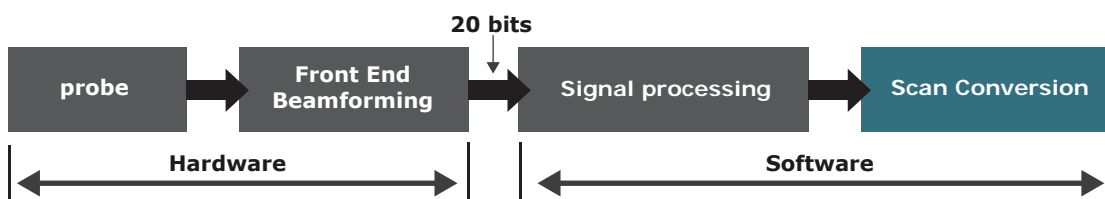
The RF platform reads a wider range of signals, resulting in clearer, higher-resolution images. This endows the system with unique capabilities, including fullscreen mode and high-resolution images free of distortion, which aids in diagnosis of small lesions.

### Traditional Ultrasound Platform - Image data processing platform



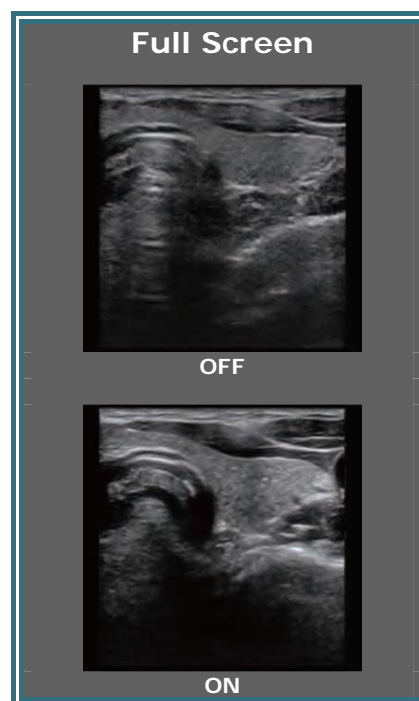
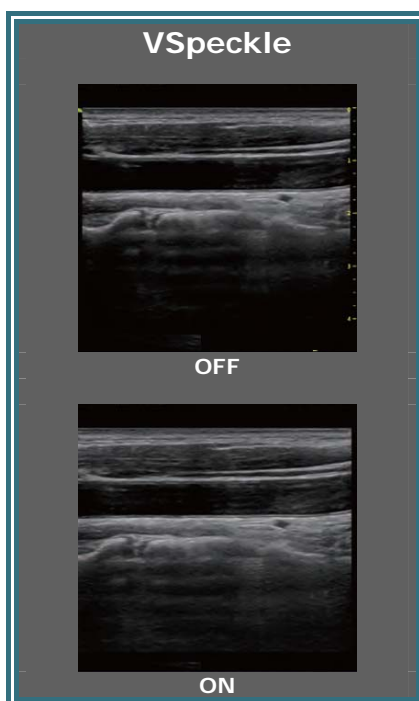
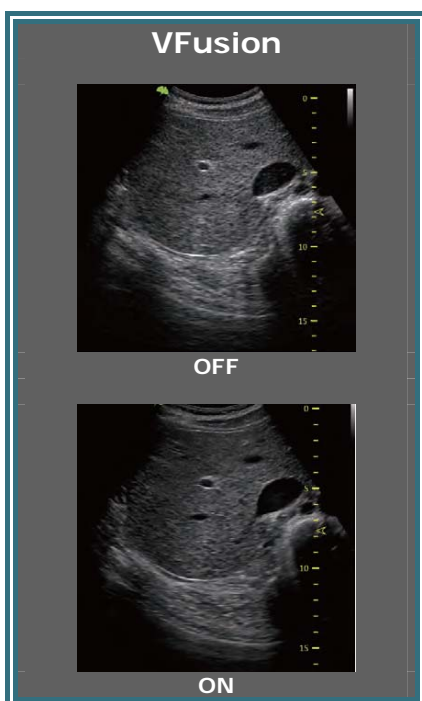
### ESE-5 Innovative RF Ultrasound Platform

#### RF signal data processing platform for better resolution and definition



## Xcen Probe Technology

The Xcen high-frequency wideband probe transmits at up to 14 MHz and provides clearer images of subtle variations in tissue, which allows lesions to be diagnosed earlier.





## Remote Diagnostics

- ESE-5 remote diagnostics solutions provide lossless data transmission, and back-office ultrasound workstation seamless operation experience.
- Use wired and wireless transmission to send the image via Bluetooth, mail, etc. to the specified contact.

## OB/ GYN

- A highly sensitive touch screen and simple 4D interface deliver a smoother workflow and reduce the burden of operation on clinicians.
- A full range of obstetric and gynecological functions, including comprehensive 3D/4D clinical applications, MCUT and AutoNT.
- Special rendering techniques provide enhanced details in shadows.
- A smart 3D/4D touchscreen allows users to rotate and zoom in on images at any angle. Combined with magic cut technology, these features provide simple, intuitive operation.

## Fast Operation and Workflow

- Fast boot-up, reducing the waiting time.
- Email and Bluetooth data transfer capability.
- One key for storage and printing.
- Intuitive, configurable touch-screen user interface.

## Technical Features

### Standard Main Unit

- Innovative RF platform
- 15 inch high resolution monitor
- 8 inch touch screen
- Pulse Wave Doppler & HPRF
- Color/Power/Directional Power Doppler Flow Imaging
- Phase-inversion/ Tissue Harmonic Imaging
- Vfusion (Spatial Compound Imaging)
- VSpeckle (Speckle Reduction Imaging)
- Easy Compare
- RF-based Zoom
- Full Screen Imaging
- Triplex 2D/Color/PW
- Auto Optimization
- Auto trace in PW/CW
- B+CF simultaneously
- 120G SSD
- Patient database
- Quick store
- Network storage and printing
- Vascular calculations

- Cardiac calculations
- OB calculations and tables
- Gynecological calculations
- Urological calculations
- Renal calculations
- one Battery
- 2 USB port in the system

### Standard Modules

- Smart 3D
  - 4D Module
- ### Optional Modules
- Tomographic display (Mcut)
  - Tview (Trapezoid Imaging)
  - CWD
  - VTissue
  - ECG
  - Tissue Doppler (TD)
  - Tissue Velocity Imaging (TVI)
  - MAM (multi angle M mode, not available in Germany, France, Italy, Norway, USA, Japan)
  - Color M mode (not available in USA, Canada, Australian, Europe)

- Tissue Velocity M-mode (TVM) (not available in USA, Canada, Australian, Europe, Japan)
- Auto IMT
- Pview
- Needle enhancement
- wireless connection package (need to be installed in the factory)
- SGC(scanning gain compensation)
- HQ (High Quality) 3D/4D
- Support Mobile data transmission via Bluetooth and E-Mail (such as 3D/4D baby face)
- Auto NT
- Inversion mode
- Magic cut
- Smart touch panel 3D/4D
- Free view
- DICOM export and storage, printer, worklist
- USB DVDRW
- Travelling case

### Optional Transducers

<b>F2-5C</b>	128 element convex probe
<b>D3-6C</b>	128 element wideband 3d/4D convex probe
<b>G4-9E</b>	128 element wideband endocavity probe
<b>G4-9M</b>	128 element wideband micro convex probe
<b>F4-12L</b>	128 element wideband high frequency linear probe
<b>G1-4P</b>	64 element phase array probe

<b>F2-5C</b>	resuable stainless Biopsy guide
<b>F4-12L</b>	resuable stainless Biopsy guide
<b>G1-4P</b>	resuable stainless Biopsy guide
<b>G4-9E</b>	resuable stainless Biopsy guide
USB Single button foot switch	
USB Double button foot switch	
Battery installed in the system (not in the cart)	



ESSE3 srl, Via Garibaldi 30  
 14022 Castelnuovo D.B. (AT)  
 Tel +39 011 99 27 706  
 Fax +39 011 99 27 506  
 e-mail [esse3@chierinet.it](mailto:esse3@chierinet.it)  
 web: [www.esse3-medical.com](http://www.esse3-medical.com)

